



**LOADING
SYSTEMS**



BIM PROJECTS: PRODUCT CATALOGUE

Dock equipment and industrial doors

www.loading-systems.com

Index

1. Technical description	3
2. Catalogue contents	3
3. Catalogue use in Autodesk Revit	3
3.1. Files location	3
4. Working with catalogue	4
4.1. Doors	4
4.2. Dock levelers, shelters and other equipment	5
5. Information about the manufacturer	6

1. Technical description

Catalogue of dock equipment and industrial doors LOADING SYSTEMS is created to be compatible with Autodesk Revit version 2016 and newer.

The catalogue is based on the parameters provided by the manufacturer LOADING SYSTEMS and contains parametric object of industrial doors, dock levelers, dock shelters and other dock equipment. Families are equipped with numerous technical information to simplify user's specifications when using them in projects. Functionality of the catalogue is guaranteed only when using all their parts.



2. Catalogue contents

All components of the catalogue are supplied in folder „LOADINGSYSTEMS.RA.2017.en.v1“ (or in corresponding ZIP archive) containing following parts:

- folder „manual“ with file „Manual.pdf“, containing this manual
- folder „families“ containing subfolders with the products sorted according to categories

3. Catalogue use in Autodesk Revit

3.1. Files location

After downloading the archive, it is necessary to extract it to the folder specified by you to use it in Revit. From there you can load the families into your project using Revit command **Load family**. When loading family with type catalogue attached you above to select which types you want to load.

For maximum usefulness, it is necessary to load material library into project, the process is shown on the image below.

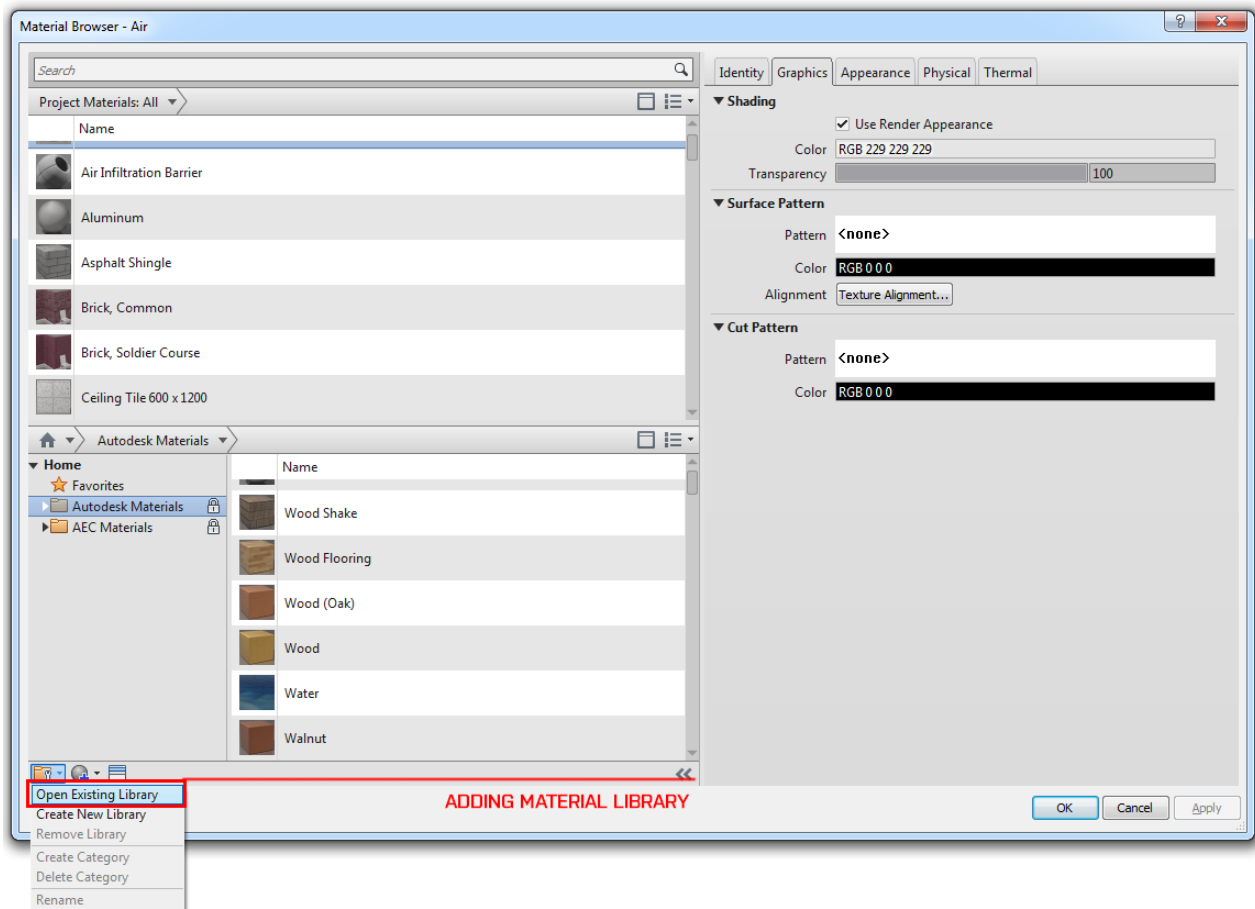


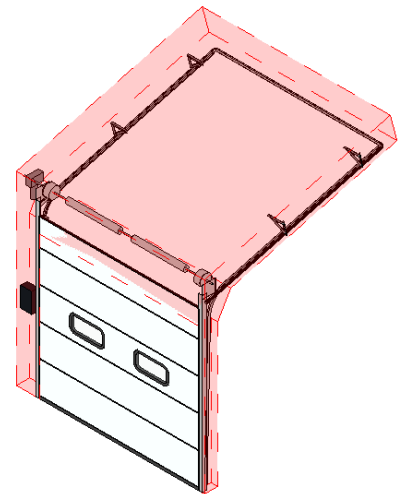
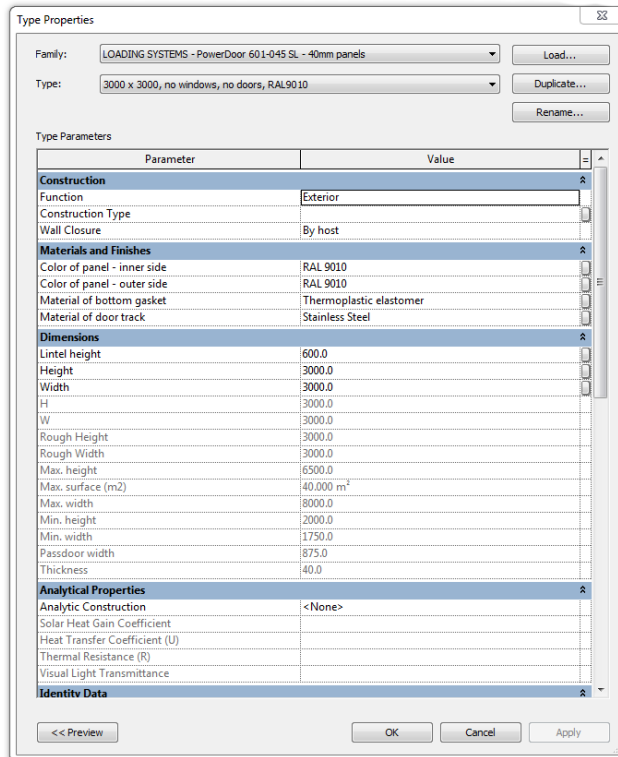
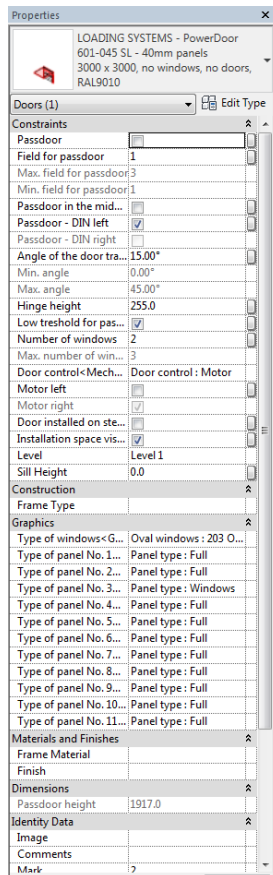
fig.1 – Loading material library to project

4. Working with catalogue

The families are sorted per manufacturer’s categories – industrial doors, dock levelers, dock shelters, and dock equipment. To use those families, you should load them into your project using command **Load families**. After loading, based on the type of product, families will appear in the category **Doors** or **Generic Models**.

4.1. Industrial doors

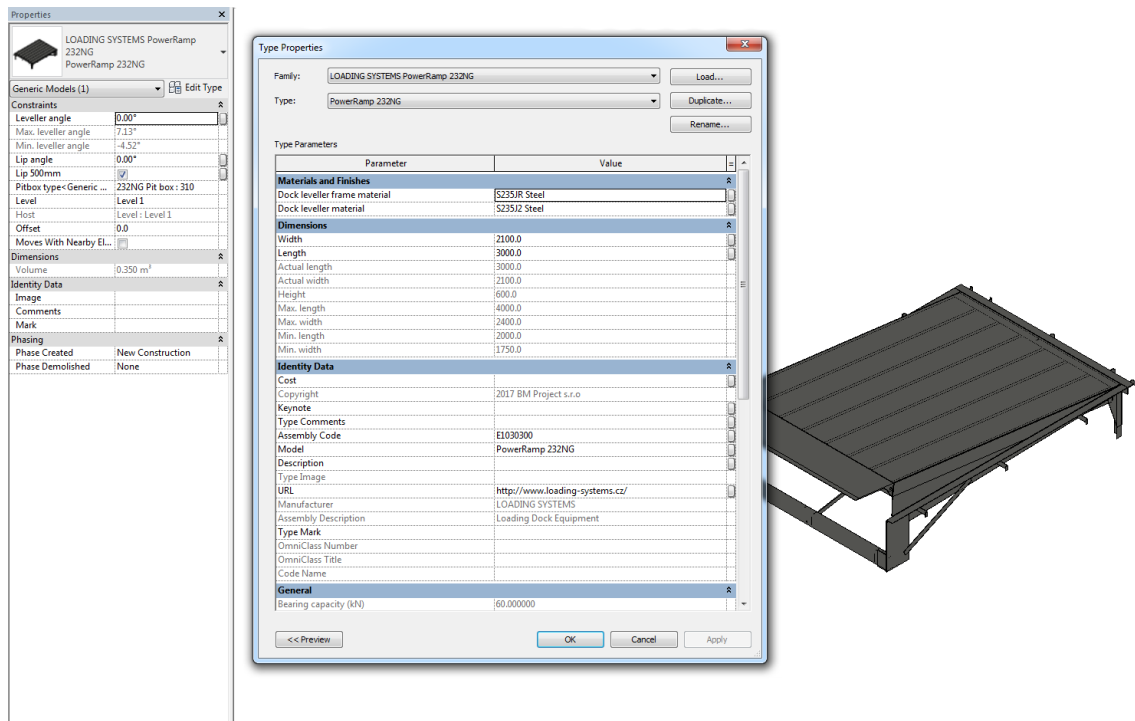
For industrial doors, its best to use tool Doors. Doors can be only hosted on walls therefore, you should have wall already placed in the project. Industrial doors are very complicated and have many parameters for setting. It is best visible on the following picture.



4.2. Dock levelers, shelters and other equipment

All other product is based of Revit category Special equipment. They are non-hosted and therefore could be used based on your needs. Every product contains parameters for their setting with restrictions according to the manufacturer, e.g. you will not be allowed to use longer dock leveler than manufacturer provides.

On the next picture, you can see parameter option for dock leveler.



5. Information about the manufacturer

Loading Systems provides you with overall solutions for loading and unloading. Advising, designing, manufacturing, supporting, installing and servicing, we offer complete solutions for loading and unloading in the form of industrial doors, docking systems and service!

As a European market leader and pioneer, we manage the entire process from design to installation and service. With our own offices and factories, we are large, but as an independent family business we offer continuity, flexibility and involvement.

Organization

For over 50 years we have been leading pioneers in the field of loading and unloading! In our own factories, we make thoughtful loading and unloading solutions. Efficient and automated, but also customized for our customers!

In the market for loading and unloading, we distinguish ourselves through continuity, flexibility and involvement. This "DNA" is in our company, in all our employees from production assistant to the CEO.

Service

With offices throughout Europe and beyond Loading Systems is always at hand. 7 days a week and 24 hours a day. Because of our short lines of communication, we are able to act quickly and promptly. We offer tailored service and enjoy going even one step further!

For example, as a partner in loading and unloading we help to minimize breakdowns to keep your operating costs low and ensure safety in and around your loading platforms. Above all you have to experience service!

Sustainability

Our loading and unloading solutions are not only made bespoke and of high quality, but also more and more sustainable! Our energy-efficient approach has led to solutions by up to 96% reduction in energy losses in industrial buildings.

We avoid environmentally hazardous materials in our production and we minimize waste. And through changes in our logistics process, the number of logistic movements decreased by approximately 50%. Thus, we are continuously working on sustainability and energy efficiency.

In addition, we are ISO 14001:2015 certified!

Safely / safety

We also maintain health and safety as our number one priority, Loading Systems supplies safe and effective solutions for your company.

Whether it is, for example, ensuring the safe operation of your deliveries, installation of high speed industrial doors in your warehouse or provide a complete loading platform ... we provide the most efficient and safe solutions within your company.

Continuity, flexibility and involvement

Delivering solutions in the areas of loading and unloading is not so unique. But when it comes to really meet specific requirements, and you notice that we work not only from experience but also with a lot of commitment, then you will be happy to be taken care of by a committed and flexible specialist. We take care.